



ARROW ENGINEERING INDUSTRIES PVT LTD

*The One Reliable Stop for
CNC MACHINING & SHEET METAL FABRICATION*

We are an ISO 9001:2015 certified company employed in
Manufacturing of Transparency Models & aerospace components



ADDRESS:5-5-35/287/1A, PLOT NO.64

Saibaba Nagar Colony,Kukatpally,Hyderabad-500072

Mail id : aeipl1910@gmail.com

Telephone :040-23070167 /Fax: 040-23070168 9246549570 ,9959650733

www.arrowcnctech.com



**ARROW ENGINEERING
INDUSTRIES PVT LTD**

CONTENT

ABOUT US

SERVICES & PRODUCTS

In House

**CNC PRECISION MACHINING | SHEET METAL FABRICATION
REPLICATION**

Out Source

**Laser CUTTING | WATERJET CUTTING | OXY FUEL & Plasma
CUTTING | TURRET PUNCHING | CNC BENDING | ROBO WELDING
ELECTRO PLATING | POWDER COATING & HDG | Metal Heat
Treatment**

INFRASTRUCTURE

UNIT 1

UNIT 2

MACHINERIES

QC ASSURANCE & EQUIPMENTS

VISION & MISSION

OUR CUSTOMERS

CERTIFICATION

GALLERY

CONTACT US

ABOUT US

ARROW ENGINEERING INDUSTRIES PVT LTD is an ISO 9001:2015 certified company which employed in aerospace machining components, large scale fabrications, Repelication & Civil works. ARROW ENGINEERING INDUSTRIES PVT LTD was an Established in August 2012. Apart from this our Company has spreaded across various cities in Manufacturing of Transparency Demo Models, Special Purpose Tools & Components, mechanical engineering components with sub assemblies to our various valued customers like HAL, DRDL, RCI, BDL, ECIL, NFC, ORDINANCE FACTOR, BHEL & ISRO. Our two manufacturing units are located at Kukatpally Industrial Estate. The factory is spacious and well spread over 6,000 Sq. feet. Unit.



Our corporate aim of supplying our customers with an extensive range of quality products is supported by competition price and aggressive delivery schedule.

ARROW ENGINEERING INDUSTRIES PVT LTD ,Today is among the largest global suppliers of permanent modular construction and temporary modular space. Our company remains a leading innovator in modular construction and the company is consistently offering new products to fullfill emerging need through MACHINING,FABRICATION AND CIVIL for aerospace and defence sector.

Services & Products

CNC Precision Machining

Our broad customer base symbolizes our commitment to providing our clients with quality products at the right price. Over the past 5 years our staff have gained and developed a unique ethos through supplying our customers with precision products that have effectively met their needs.



ROTOR



Lower Housing



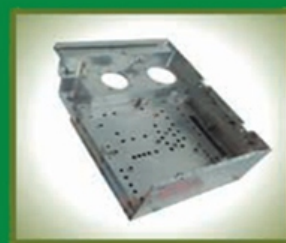
CHASSIS



225 Housing



MOUNTING CAPS



Housing

FABRICATION

Our Fabrication Department is supported by a full-service tool room that provides the capability to form difficult and multiple bends, precision rolling and welding for a broad array of customized prototypes and parts. fabrication can accurately produce multiple parts for assembly projects on-time and defect free. All precision sheet metal projects are assigned a project manager to coordinate design plans, communicate progress and maintain quality and cost expectations.



Defence Shelter

We provide Defense Shelters that are exclusively designed for Defense personnel. These shelters stand pretty high in strength, are really compact in structure and can withstand wind pressure and rainfall. We can also customize our available options which are easy to install, repack and unpack and offer full comfort to the end users



PORTA CABIN

Whether you need expansive office accommodation or a small project office, an entire school complex or a single classroom, a laboratory, a health centre, toilet facilities or a canteen - you'll find a Smartec building to meet your needs.

Being a well-established organization, we are offering a superb quality range of Prefab Cabins. We manufacture these cabins using high grade raw material and modern techniques in accordance with the set industry standards.

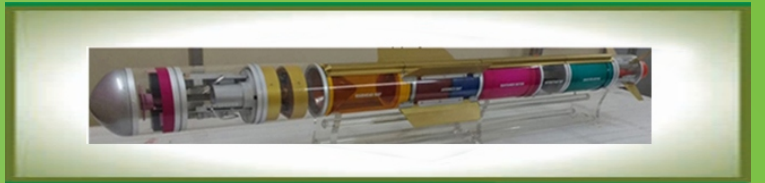
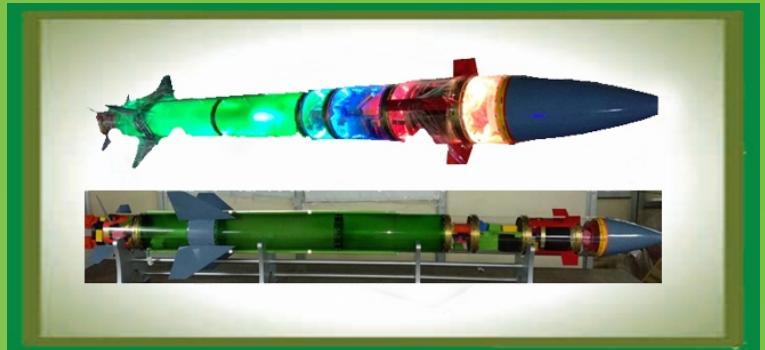


TRANSPARENCY & FRP SOLID MODELS

Our company also manufactures replicas of any components. This is a prestigious missile component which we manufacture in our company.

These all parts we are also manufacturing in composite materials.

TRANSPARENCY



FRP SOLID MODELS





Our Machinery



CNC MILLING MACHINE
4th AXIS



CNC MILLING MACHINE
3rd AXIS



CNC TURNING



Shearing Machine



Bending Machine



AC/DC TIG Welding Machine



MIG Welding Machine



Sheet Metal Rolling Machine

Quality Assurance

QC Equipments

We have a comprehensive range of inspection equipment including Tool-setter Mitutoyo digital measuring equipment ranging from Vernier Calipers, Bore Gauges, Height Gauges, Bevel Protractors, Dial Gauges, surface measuring equipment and a wide range of other equipment, all of which is controlled and calibrated as per quality system. The list of instruments is enclosed for your perusal.



QC Major Equipments

HEIGHT MASTER is a vertical gauging device that is ideal for use in accurately gauging heights, and scribing operations. The unit is efficient in performance in any workshop environment. It has a compact layout, which leads to adequate mobility and stability. The unit is easy to use, features a self contained operation with the use of an interchangeable battery as its power source.



DIGITAL HEIGHT GAUGE

Height Gauge supplied with digital meter carbide Tipped scriber. The rigid column structure and adjustable main scale ensures accurate measuring results with fine adjustment and chrome plated scale for longer tool life.



BENCH TOP PROFILE PROJECTOR (SP-250)

The bench top profile projector is a device that applies the principles of optics to the inspection of manufactured parts. It has a screen size of 250mm which helps to inspect the product very keenly. It has a work stage of 160x160mm. The profile projector has a unique rigid pedestal system facilitates vibration free handling of component.



Vision & Mission

VISION

To become the stratum manufacturing company for the aerospace & defence industries providing world-class products to satisfied customers through continuous improvement driven by the probity, teamwork and creativity of our people.

Mission

We advocate for policies and responsible budgets that keep our customers and country strong, bolster our capacity to innovate, and spur our economic growth.

Values

Our values can be brief in three words: Probability, Reputation and Responsibility.

Our Customers

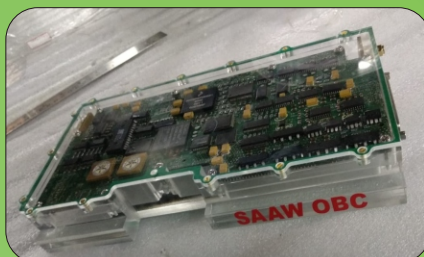
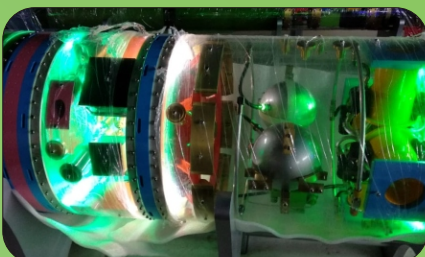
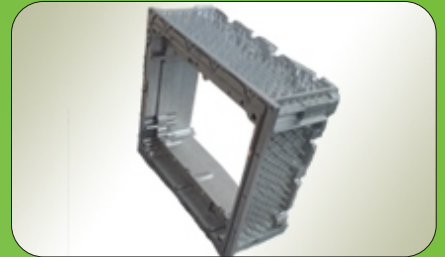
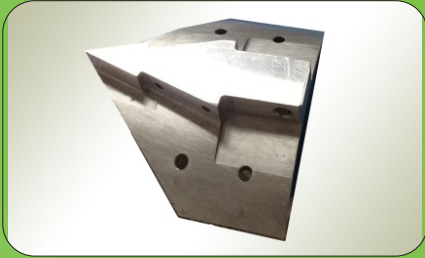




CERTIFICATIONS



GALLERY





Contact Us

Contact Persons

G BALI REDDY

Director | 9246549570

CH BABU

Director | 9959650733

Office Address

AD : 5-5-35/287/1A, PLOT NO.64

Saibaba Nagar Colony, Kukatpally, Hyderabad-500072

Telephone : 040-23070167, Fax : 040-23070168

Emal : aeipl1910@gmail.com

www.arrowcnctech.com